

**CHICAGO - DELIVERING ZERO EMISSIONS COMMUNITIES (DZEC)  
TRUCK COUNTING PROJECT**

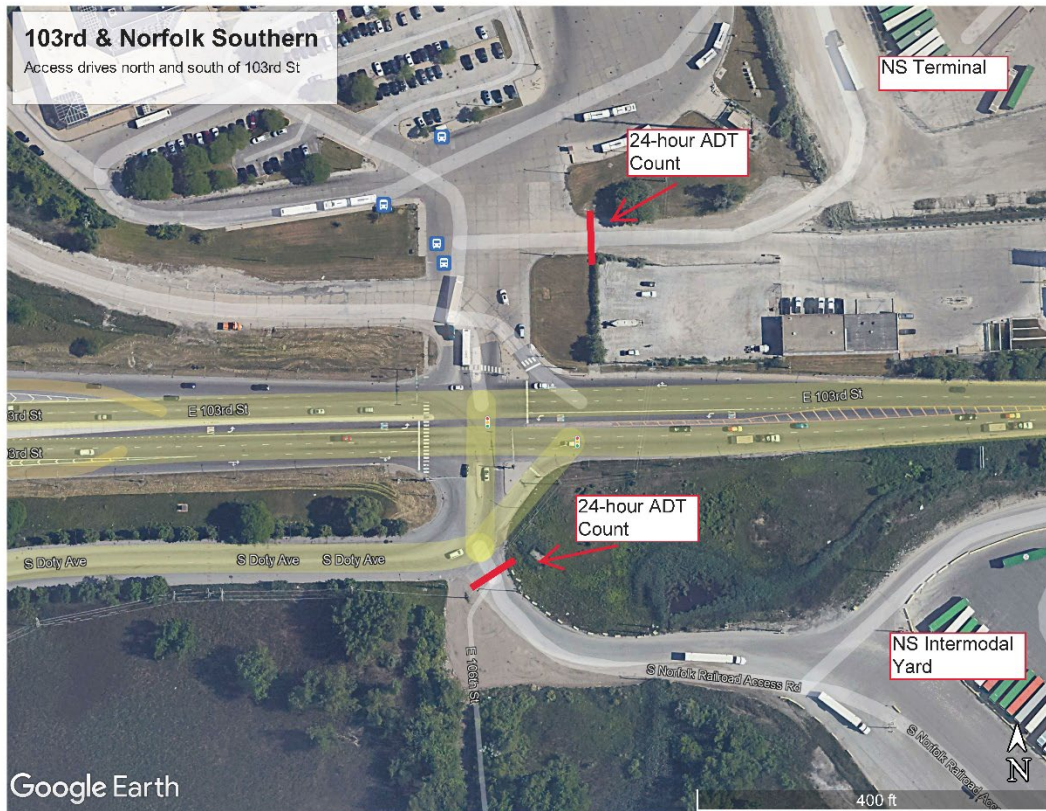


COUNT LOCATIONS: S. 103<sup>rd</sup> St. – Norfolk Southern north side  
South Deering  
S. 103<sup>rd</sup> St. – Norfolk Southern south side –  
South Deering

COUNT DATE: 04-18-2023

COUNT TYPE: 24-Hour Average Daily Traffic/Automatic Traffic Recorder

**PROJECT LOCATION MAP**



**COUNT TYPE: 24-Hour Average Daily Traffic**

Average Daily Traffic Counts (ADT), also referred to by Miovision as ATRs – Automatic Traffic Recorder (ATR) counts are used to capture the volume of vehicles that travel on a roadway over a given period of time. ADTs count all vehicles that travel through a specific point of a road over a short duration time period and are representative only of the time period and type of traffic volumes included. ADT is a standard measure of traffic volume used for traffic monitoring and forecasting.

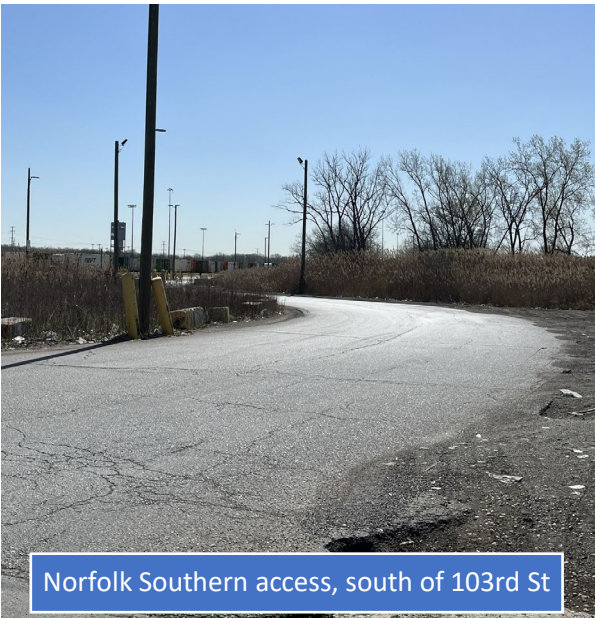
**SITE PHOTOS**



Norfolk Southern access, north of 103rd St



Norfolk Southern access, north of 103rd St



Norfolk Southern access, south of 103rd St



Norfolk Southern access, south of 103rd St



## SUMMARY DATA REPORTS

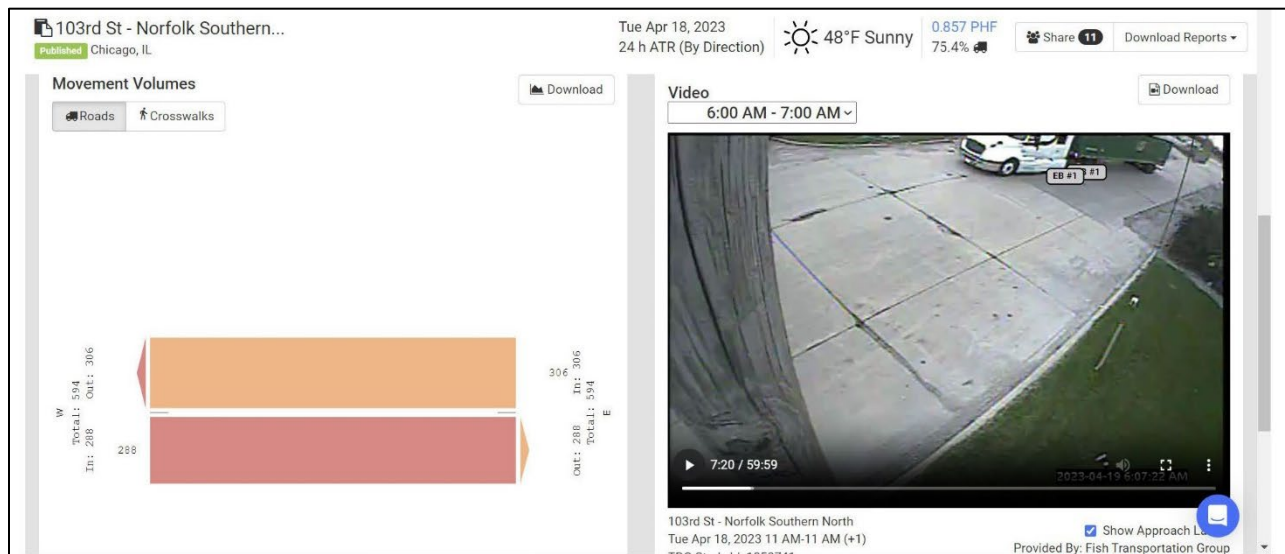
Truck traffic data was collected utilizing Miovision Scout video data collection (cameras). Video data was collected for a 24-hour period on a typical, non-holiday weekday. Miovision DataLink was used to generate reports and data visualizations to analyze traffic and truck count data. In addition, FTG generated truck-specific data reports. Summary data reports from both Miovision Datalink and FTG are described and presented below.

### Miovision Datalink Reports

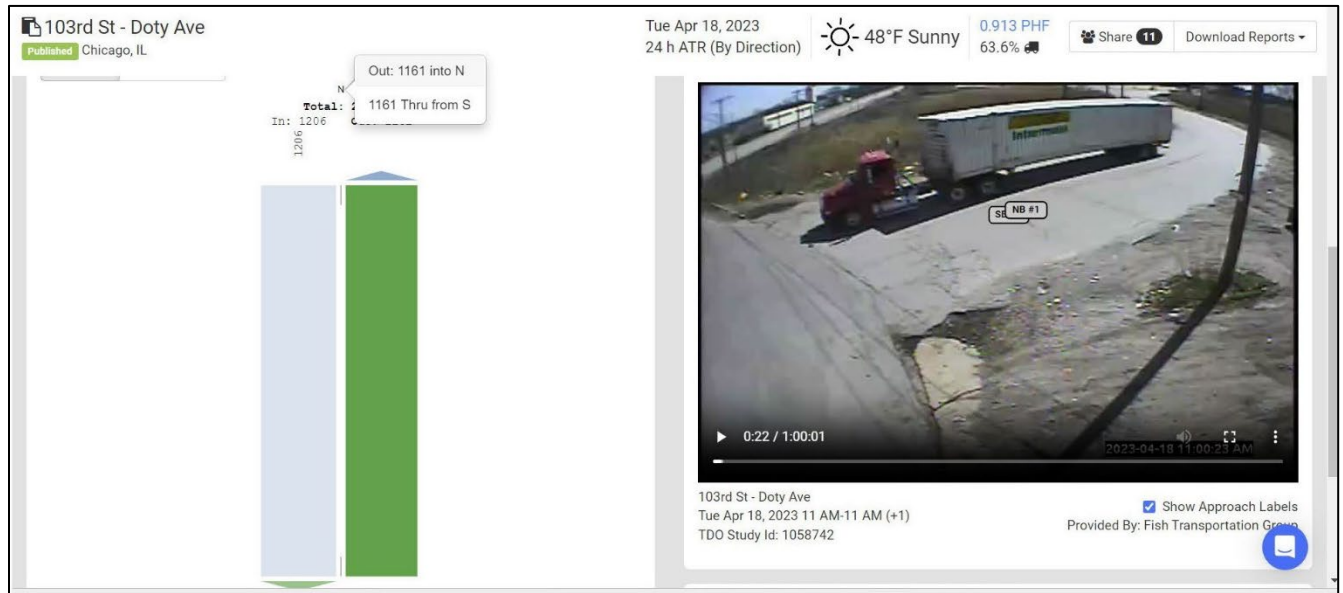
The following information is provided as generated from the Miovision Datalink portal:

1. Detailed PDF report presenting raw traffic volumes summarized by:
  - Time increments (i.e., 15-minute, 60-minute)
  - Length of count (i.e., Peak hour counts, 12-hour counts, 24-hour counts)
  - Data tables presented as: full count length summary, AM peak period, midday, PM peak period
2. Intersection data plot (movement visualization) showing Intersection diagram (vehicles entering and exiting the intersection)

Example from Miovision Datalink Portal  
Norfolk Southern access, north of 103<sup>rd</sup> Street



Example from Miovision Datalink Portal  
Norfolk Southern access, south of 103rd Street (at Doty Ave)



**FTG Summary Reports**

Truck volume summary reports were generated by FTG. The following reports were prepared for each count location:

- Hourly truck volumes, tabulated by
  - Hour
  - Direction
  - Truck classification

Both Miovision and FTG reports are attached below.

103rd St - Norfolk Southern North - ATR

Tue Apr 18, 2023

Full Length (11 AM-11 AM (+1))

All Classes (Lights, Articulated Trucks, Buses and Single-Unit Trucks)

All Channels

ID: 1058741, Location: 41.70844, -87.580185

Provided by: Fish Transportation Group Inc.

1950 N Washington Street, Suite 211,

Naperville, IL, 60563, US

Leg Direction	East Westbound		West Eastbound		Int
	T	App	T	App	
Time					
2023-04-18 11:00AM	23	23	24	24	47
12:00PM	18	18	18	18	36
1:00PM	21	21	17	17	38
2:00PM	17	17	18	18	35
3:00PM	17	17	15	15	32
4:00PM	14	14	12	12	26
5:00PM	9	9	6	6	15
6:00PM	13	13	7	7	20
7:00PM	7	7	6	6	13
8:00PM	6	6	5	5	11
9:00PM	8	8	8	8	16
10:00PM	7	7	7	7	14
11:00PM	12	12	11	11	23
2023-04-19 12:00AM	8	8	6	6	14
1:00AM	6	6	7	7	13
2:00AM	5	5	6	6	11
3:00AM	9	9	14	14	23
4:00AM	17	17	19	19	36
5:00AM	21	21	23	23	44
6:00AM	17	17	9	9	26
7:00AM	6	6	6	6	12
8:00AM	11	11	14	14	25
9:00AM	17	17	11	11	28
10:00AM	17	17	19	19	36
<b>Total</b>	306	306	288	288	594
<b>% Approach</b>	100%	-	100%	-	-
<b>% Total</b>	51.5%	51.5%	48.5%	48.5%	-
<b>Lights</b>	71	71	75	75	146
<b>% Lights</b>	23.2%	23.2%	26.0%	26.0%	24.6%
<b>Articulated Trucks</b>	202	202	19	19	221
<b>% Articulated Trucks</b>	66.0%	66.0%	6.6%	6.6%	37.2%
<b>Buses and Single-Unit Trucks</b>	33	33	194	194	227
<b>% Buses and Single-Unit Trucks</b>	10.8%	10.8%	67.4%	67.4%	38.2%

\*T: Thru

103rd St - Norfolk Southern North - ATR

Tue Apr 18, 2023

Full Length (11 AM-11 AM (+1))

All Classes (Lights, Articulated Trucks, Buses and Single-Unit Trucks)

All Channels

ID: 1058741, Location: 41.70844, -87.580185

Provided by: Fish Transportation Group Inc.

1950 N Washington Street, Suite 211,

Naperville, IL, 60563, US



103rd St - Norfolk Southern North - ATR

Tue Apr 18, 2023

Midday Peak (Apr 18 2023 11AM - 12 PM)

All Classes (Lights, Articulated Trucks, Buses and Single-Unit Trucks)

All Channels

ID: 1058741, Location: 41.70844, -87.580185

Provided by: Fish Transportation Group Inc.

1950 N Washington Street, Suite 211,

Naperville, IL, 60563, US

Leg Direction	East Westbound		West Eastbound		Int
	T	App	T	App	
Time					
2023-04-18 11:00AM	5	5	7	7	12
11:15AM	5	5	9	9	14
11:30AM	8	8	6	6	14
11:45AM	5	5	2	2	7
<b>Total</b>	23	23	24	24	47
<b>% Approach</b>	100%	-	100%	-	-
<b>% Total</b>	48.9%	<b>48.9%</b>	51.1%	<b>51.1%</b>	-
<b>PHF</b>	0.719	<b>0.719</b>	0.667	<b>0.667</b>	0.839
<b>Lights</b>	4	4	5	5	9
<b>% Lights</b>	17.4%	<b>17.4%</b>	20.8%	<b>20.8%</b>	19.1%
<b>Articulated Trucks</b>	15	15	1	1	16
<b>% Articulated Trucks</b>	65.2%	<b>65.2%</b>	4.2%	<b>4.2%</b>	34.0%
<b>Buses and Single-Unit Trucks</b>	4	4	18	18	22
<b>% Buses and Single-Unit Trucks</b>	17.4%	<b>17.4%</b>	75.0%	<b>75.0%</b>	46.8%

\*T: Thru

103rd St - Norfolk Southern North - ATR

Tue Apr 18, 2023

Midday Peak (Apr 18 2023 11AM - 12 PM)

All Classes (Lights, Articulated Trucks, Buses and Single-Unit Trucks)

All Channels

ID: 1058741, Location: 41.70844, -87.580185

Provided by: Fish Transportation Group Inc.

1950 N Washington Street, Suite 211,

Naperville, IL, 60563, US





**103rd St - Norfolk Southern North - ATR**

Tue Apr 18, 2023

PM Peak (Apr 18 2023 1:15PM - 2:15 PM)

All Classes (Lights, Articulated Trucks, Buses and Single-Unit Trucks)

All Channels

ID: 1058741, Location: 41.70844, -87.580185

Provided by: Fish Transportation Group Inc.

1950 N Washington Street, Suite 211,

Naperville, IL, 60563, US

Leg Direction	East		West		Int
	Westbound		Eastbound		
Time	T	App	T	App	
2023-04-18 1:15PM	5	5	5	5	10
1:30PM	6	6	7	7	13
1:45PM	7	7	2	2	9
2:00PM	5	5	6	6	11
<b>Total</b>	23	23	20	20	43
<b>% Approach</b>	100%	-	100%	-	-
<b>% Total</b>	53.5%	53.5%	46.5%	46.5%	-
<b>PHF</b>	0.821	0.821	0.714	0.714	0.827
<b>Lights</b>	8	8	1	1	9
<b>% Lights</b>	34.8%	34.8%	5.0%	5.0%	20.9%
<b>Articulated Trucks</b>	13	13	5	5	18
<b>% Articulated Trucks</b>	56.5%	56.5%	25.0%	25.0%	41.9%
<b>Buses and Single-Unit Trucks</b>	2	2	14	14	16
<b>% Buses and Single-Unit Trucks</b>	8.7%	8.7%	70.0%	70.0%	37.2%

\*T: Thru

103rd St - Norfolk Southern North - ATR

Tue Apr 18, 2023

PM Peak (Apr 18 2023 1:15PM - 2:15 PM)

All Classes (Lights, Articulated Trucks, Buses and Single-Unit Trucks)

All Channels

ID: 1058741, Location: 41.70844, -87.580185

Provided by: Fish Transportation Group Inc.

1950 N Washington Street, Suite 211,

Naperville, IL, 60563, US



**103rd St - Norfolk Southern North - ATR**

Wed Apr 19, 2023

AM Peak (Apr 19 2023 5:15AM - 6:15 AM) - Overall Peak Hour

All Classes (Lights, Articulated Trucks, Buses and Single-Unit Trucks)

All Channels

ID: 1058741, Location: 41.70844, -87.580185

Provided by: Fish Transportation Group Inc.

1950 N Washington Street, Suite 211,

Naperville, IL, 60563, US

Leg Direction	East Westbound		West Eastbound		Int	
	T	App	T	App		
Time						
	2023-04-19 5:15AM	7	7	7	7	14
	5:30AM	6	6	6	6	12
	5:45AM	4	4	6	6	10
	6:00AM	8	8	4	4	12
	<b>Total</b>	25	25	23	23	48
	<b>% Approach</b>	100%	-	100%	-	-
	<b>% Total</b>	52.1%	52.1%	47.9%	47.9%	-
	<b>PHF</b>	0.781	0.781	0.821	0.821	0.857
	<b>Lights</b>	4	4	8	8	12
	<b>% Lights</b>	16.0%	16.0%	34.8%	34.8%	25.0%
	<b>Articulated Trucks</b>	19	19	1	1	20
	<b>% Articulated Trucks</b>	76.0%	76.0%	4.3%	4.3%	41.7%
	<b>Buses and Single-Unit Trucks</b>	2	2	14	14	16
	<b>% Buses and Single-Unit Trucks</b>	8.0%	8.0%	60.9%	60.9%	33.3%

\*T: Thru

103rd St - Norfolk Southern North - ATR

Wed Apr 19, 2023

AM Peak (Apr 19 2023 5:15AM - 6:15 AM) - Overall Peak Hour

All Classes (Lights, Articulated Trucks, Buses and Single-Unit Trucks)

All Channels

ID: 1058741, Location: 41.70844, -87.580185

Provided by: Fish Transportation Group Inc.

1950 N Washington Street, Suite 211,

Naperville, IL, 60563, US





Fish Transportation Group Inc.  
 1950 N Washington Street  
 Suite 211  
 Naperville, Illinois, United States 60563  
 708-660-0305

Count Name: 103rd St -  
 Norfolk Southern North  
 Site Code:  
 Start Date: 04/18/2023  
 Page No: 1

**Direction (Westbound)**

Start Time	Lights	Mediums	Articulated Trucks	Total
11:00 AM	4	4	15	23
12:00 PM	4	4	10	18
1:00 PM	8	2	11	21
2:00 PM	5	0	12	17
3:00 PM	5	2	10	17
4:00 PM	8	0	6	14
5:00 PM	6	0	3	9
6:00 PM	2	6	5	13
7:00 PM	1	0	6	7
8:00 PM	3	0	3	6
9:00 PM	1	0	7	8
10:00 PM	0	1	6	7
11:00 PM	3	1	8	12
04/19/2023 12:00 AM	1	1	6	8
1:00 AM	1	1	4	6
2:00 AM	1	0	4	5
3:00 AM	2	0	7	9
4:00 AM	1	2	14	17
5:00 AM	5	2	14	21
6:00 AM	2	2	13	17
7:00 AM	0	2	4	6
8:00 AM	2	1	8	11
9:00 AM	3	1	13	17
10:00 AM	3	1	13	17
Total	71	33	202	306
Total %	23.2	10.8	66.0	100.0
AM Times	5:00 AM	11:00 AM	11:00 AM	11:00 AM
AM Peaks	5	4	15	23
PM Times	4:00 PM	12:00 PM	2:00 PM	1:00 PM
PM Peaks	8	4	12	21



Fish Transportation Group Inc.  
 1950 N Washington Street  
 Suite 211  
 Naperville, Illinois, United States 60563  
 708-660-0305

Count Name: 103rd St -  
 Norfolk Southern North  
 Site Code:  
 Start Date: 04/18/2023  
 Page No: 2

**Direction (Eastbound)**

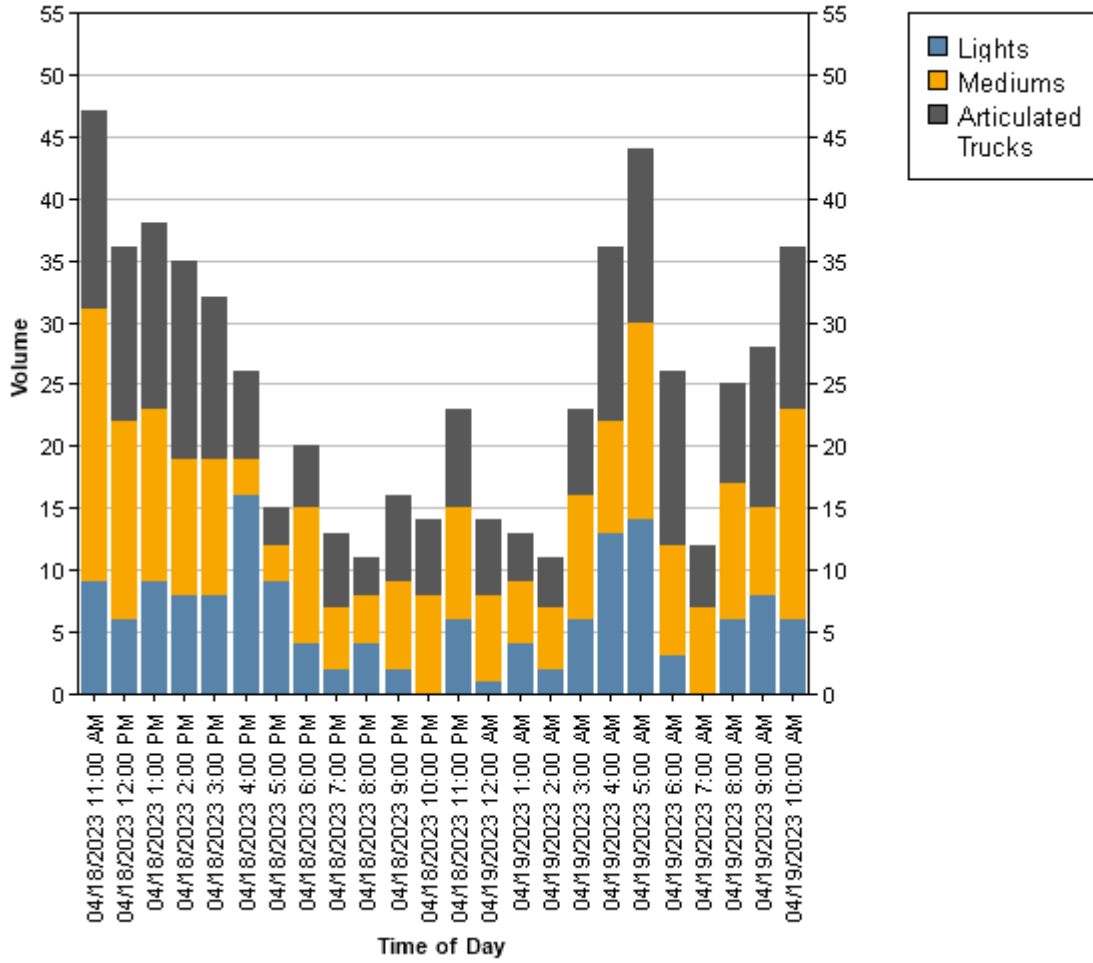
Start Time	Lights	Mediums	Articulated Trucks	Total
11:00 AM	5	18	1	24
12:00 PM	2	12	4	18
1:00 PM	1	12	4	17
2:00 PM	3	11	4	18
3:00 PM	3	9	3	15
4:00 PM	8	3	1	12
5:00 PM	3	3	0	6
6:00 PM	2	5	0	7
7:00 PM	1	5	0	6
8:00 PM	1	4	0	5
9:00 PM	1	7	0	8
10:00 PM	0	7	0	7
11:00 PM	3	8	0	11
04/19/2023 12:00 AM	0	6	0	6
1:00 AM	3	4	0	7
2:00 AM	1	5	0	6
3:00 AM	4	10	0	14
4:00 AM	12	7	0	19
5:00 AM	9	14	0	23
6:00 AM	1	7	1	9
7:00 AM	0	5	1	6
8:00 AM	4	10	0	14
9:00 AM	5	6	0	11
10:00 AM	3	16	0	19
Total	75	194	19	288
Total %	26.0	67.4	6.6	100.0
AM Times	5:00 AM	11:00 AM	11:00 AM	11:00 AM
AM Peaks	9	18	1	24
PM Times	4:00 PM	12:00 PM	2:00 PM	1:00 PM
PM Peaks	8	12	4	17





Fish Transportation Group Inc.  
1950 N Washington Street  
Suite 211  
Naperville, Illinois, United States 60563  
708-660-0305

Count Name: 103rd St -  
Norfolk Southern North  
Site Code:  
Start Date: 04/18/2023  
Page No: 3



**103rd St - Doty Ave - ATR**

Tue Apr 18, 2023

Full Length (11 AM-11 AM (+1))

All Classes (Lights, Articulated Trucks, Buses and Single-Unit Trucks)

All Channels

ID: 1058742, Location: 41.707359, -87.580681

Provided by: Fish Transportation Group Inc.

1950 N Washington Street, Suite 211,

Naperville, IL, 60563, US

Leg Direction	North Southbound		South Northbound		Int
	T	App	T	App	
Time					
2023-04-18 11:00AM	73	73	81	81	154
12:00PM	89	89	82	82	171
1:00PM	74	74	84	84	158
2:00PM	62	62	79	79	141
3:00PM	47	47	74	74	121
4:00PM	50	50	58	58	108
5:00PM	44	44	48	48	92
6:00PM	31	31	51	51	82
7:00PM	47	47	30	30	77
8:00PM	28	28	32	32	60
9:00PM	28	28	30	30	58
10:00PM	46	46	35	35	81
11:00PM	27	27	37	37	64
2023-04-19 12:00AM	26	26	29	29	55
1:00AM	21	21	28	28	49
2:00AM	29	29	26	26	55
3:00AM	47	47	40	40	87
4:00AM	48	48	36	36	84
5:00AM	77	77	40	40	117
6:00AM	63	63	43	43	106
7:00AM	34	34	35	35	69
8:00AM	83	83	58	58	141
9:00AM	61	61	36	36	97
10:00AM	71	71	69	69	140
<b>Total</b>	1206	1206	1161	1161	2367
<b>% Approach</b>	100%	-	100%	-	-
<b>% Total</b>	51.0%	51.0%	49.0%	49.0%	-
<b>Lights</b>	446	446	415	415	861
<b>% Lights</b>	37.0%	37.0%	35.7%	35.7%	36.4%
<b>Articulated Trucks</b>	530	530	269	269	799
<b>% Articulated Trucks</b>	43.9%	43.9%	23.2%	23.2%	33.8%
<b>Buses and Single-Unit Trucks</b>	230	230	477	477	707
<b>% Buses and Single-Unit Trucks</b>	19.1%	19.1%	41.1%	41.1%	29.9%

\*T: Thru

103rd St - Doty Ave - ATR

Tue Apr 18, 2023

Full Length (11 AM-11 AM (+1))

All Classes (Lights, Articulated Trucks, Buses and Single-Unit Trucks)

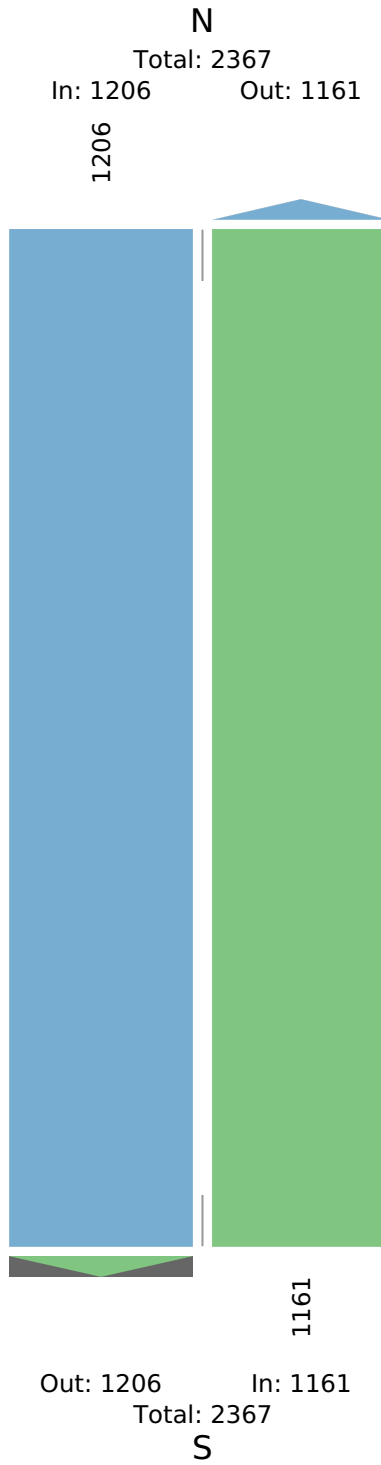
All Channels

ID: 1058742, Location: 41.707359, -87.580681

Provided by: Fish Transportation Group Inc.

1950 N Washington Street, Suite 211,

Naperville, IL, 60563, US



**103rd St - Doty Ave - ATR**

Tue Apr 18, 2023

Midday Peak (Apr 18 2023 11:45AM - 12:45 PM)

All Classes (Lights, Articulated Trucks, Buses and Single-Unit Trucks)

All Channels

ID: 1058742, Location: 41.707359, -87.580681

Provided by: Fish Transportation Group Inc.

1950 N Washington Street, Suite 211,

Naperville, IL, 60563, US

Leg Direction	North Southbound		South Northbound		Int	
	T	App	T	App		
Time						
	2023-04-18 11:45AM	21	21	25	25	46
	12:00PM	27	27	21	21	48
	12:15PM	20	20	18	18	38
	12:30PM	21	21	25	25	46
	<b>Total</b>	89	89	89	89	178
	<b>% Approach</b>	100%	-	100%	-	-
	<b>% Total</b>	50.0%	50.0%	50.0%	50.0%	-
	<b>PHF</b>	0.824	0.824	0.890	0.890	0.927
	<b>Lights</b>	21	21	28	28	49
	<b>% Lights</b>	23.6%	23.6%	31.5%	31.5%	27.5%
	<b>Articulated Trucks</b>	51	51	33	33	84
	<b>% Articulated Trucks</b>	57.3%	57.3%	37.1%	37.1%	47.2%
	<b>Buses and Single-Unit Trucks</b>	17	17	28	28	45
	<b>% Buses and Single-Unit Trucks</b>	19.1%	19.1%	31.5%	31.5%	25.3%

\*T: Thru

103rd St - Doty Ave - ATR

Tue Apr 18, 2023

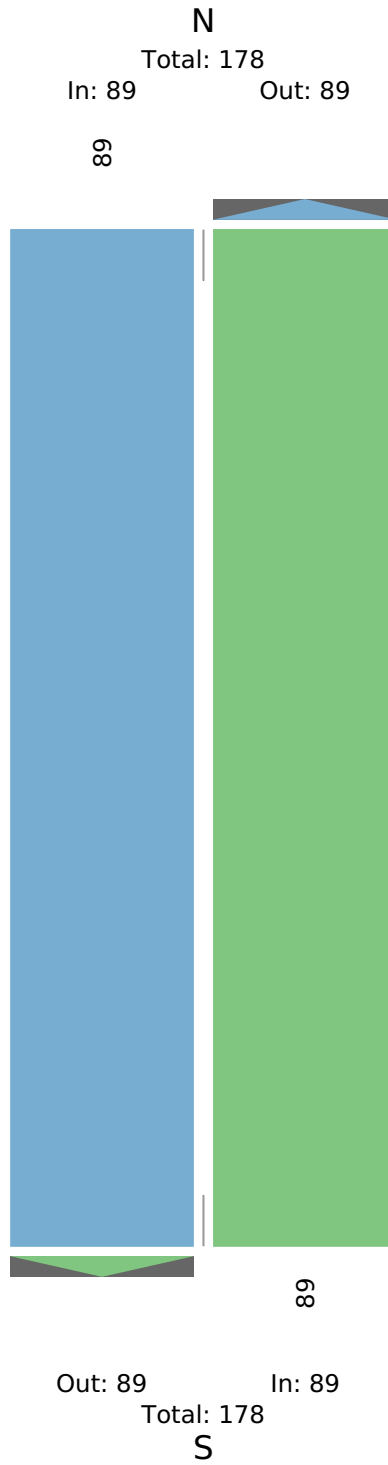
Midday Peak (Apr 18 2023 11:45AM - 12:45 PM)

All Classes (Lights, Articulated Trucks, Buses and Single-Unit Trucks)

All Channels

ID: 1058742, Location: 41.707359, -87.580681

Provided by: Fish Transportation Group Inc.  
1950 N Washington Street, Suite 211,  
Naperville, IL, 60563, US



**103rd St - Doty Ave - ATR**

Tue Apr 18, 2023

PM Peak (Apr 18 2023 1:15PM - 2:15 PM) - Overall Peak Hour

All Classes (Lights, Articulated Trucks, Buses and Single-Unit Trucks)

All Channels

ID: 1058742, Location: 41.707359, -87.580681

Provided by: Fish Transportation Group Inc.

1950 N Washington Street, Suite 211,

Naperville, IL, 60563, US

Leg Direction	North Southbound		South Northbound		Int
	T	App	T	App	
Time					
2023-04-18 1:15PM	16	<b>16</b>	23	<b>23</b>	<b>39</b>
1:30PM	25	<b>25</b>	24	<b>24</b>	<b>49</b>
1:45PM	20	<b>20</b>	25	<b>25</b>	<b>45</b>
2:00PM	21	<b>21</b>	25	<b>25</b>	<b>46</b>
<b>Total</b>	82	<b>82</b>	97	<b>97</b>	<b>179</b>
<b>% Approach</b>	100%	-	100%	-	-
<b>% Total</b>	45.8%	<b>45.8%</b>	54.2%	<b>54.2%</b>	-
<b>PHF</b>	0.820	<b>0.820</b>	0.970	<b>0.970</b>	0.913
<b>Lights</b>	28	<b>28</b>	36	<b>36</b>	64
<b>% Lights</b>	34.1%	<b>34.1%</b>	37.1%	<b>37.1%</b>	35.8%
<b>Articulated Trucks</b>	42	<b>42</b>	22	<b>22</b>	64
<b>% Articulated Trucks</b>	51.2%	<b>51.2%</b>	22.7%	<b>22.7%</b>	35.8%
<b>Buses and Single-Unit Trucks</b>	12	<b>12</b>	39	<b>39</b>	51
<b>% Buses and Single-Unit Trucks</b>	14.6%	<b>14.6%</b>	40.2%	<b>40.2%</b>	28.5%

\*T: Thru



103rd St - Doty Ave - ATR

Tue Apr 18, 2023

PM Peak (Apr 18 2023 1:15PM - 2:15 PM) - Overall Peak Hour

All Classes (Lights, Articulated Trucks, Buses and Single-Unit Trucks)

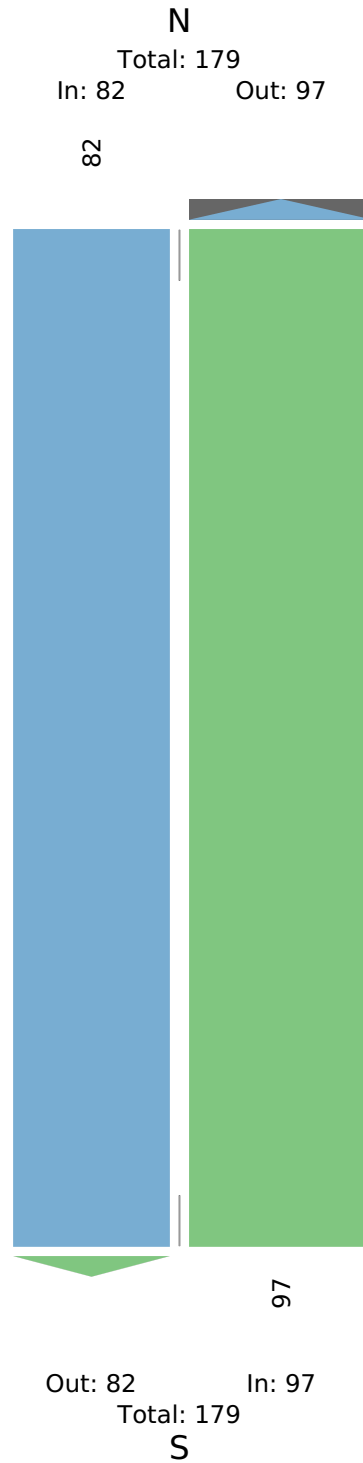
All Channels

ID: 1058742, Location: 41.707359, -87.580681

Provided by: Fish Transportation Group Inc.

1950 N Washington Street, Suite 211,

Naperville, IL, 60563, US



**103rd St - Doty Ave - ATR**

Wed Apr 19, 2023

AM Peak (Apr 19 2023 8AM - 9 AM)

All Classes (Lights, Articulated Trucks, Buses and Single-Unit Trucks)

All Channels

ID: 1058742, Location: 41.707359, -87.580681

Provided by: Fish Transportation Group Inc.

1950 N Washington Street, Suite 211,

Naperville, IL, 60563, US

Leg Direction	North Southbound		South Northbound		Int
	T	App	T	App	
Time					
2023-04-19 8:00AM	16	<b>16</b>	13	<b>13</b>	<b>29</b>
8:15AM	21	<b>21</b>	13	<b>13</b>	<b>34</b>
8:30AM	23	<b>23</b>	13	<b>13</b>	<b>36</b>
8:45AM	23	<b>23</b>	19	<b>19</b>	<b>42</b>
<b>Total</b>	83	<b>83</b>	58	<b>58</b>	<b>141</b>
<b>% Approach</b>	100%	-	100%	-	-
<b>% Total</b>	58.9%	<b>58.9%</b>	41.1%	<b>41.1%</b>	-
<b>PHF</b>	0.902	<b>0.902</b>	0.763	<b>0.763</b>	0.839
<b>Lights</b>	42	<b>42</b>	23	<b>23</b>	65
<b>% Lights</b>	50.6%	<b>50.6%</b>	39.7%	<b>39.7%</b>	46.1%
<b>Articulated Trucks</b>	24	<b>24</b>	21	<b>21</b>	45
<b>% Articulated Trucks</b>	28.9%	<b>28.9%</b>	36.2%	<b>36.2%</b>	31.9%
<b>Buses and Single-Unit Trucks</b>	17	<b>17</b>	14	<b>14</b>	31
<b>% Buses and Single-Unit Trucks</b>	20.5%	<b>20.5%</b>	24.1%	<b>24.1%</b>	22.0%

\*T: Thru

103rd St - Doty Ave - ATR

Wed Apr 19, 2023

AM Peak (Apr 19 2023 8AM - 9 AM)

All Classes (Lights, Articulated Trucks, Buses and Single-Unit Trucks)

All Channels

ID: 1058742, Location: 41.707359, -87.580681

Provided by: Fish Transportation Group Inc.  
1950 N Washington Street, Suite 211,  
Naperville, IL, 60563, US





Fish Transportation Group Inc.  
 1950 N Washington Street  
 Suite 211  
 Naperville, Illinois, United States 60563  
 708-660-0305

Count Name: 103rd St -  
 Doty Ave  
 Site Code:  
 Start Date: 04/18/2023  
 Page No: 1

**Direction (Southbound)**

Start Time	Lights	Mediums	Articulated Trucks	Total
11:00 AM	25	11	37	73
12:00 PM	21	15	53	89
1:00 PM	19	12	43	74
2:00 PM	25	9	28	62
3:00 PM	12	12	23	47
4:00 PM	17	6	27	50
5:00 PM	19	4	21	44
6:00 PM	10	7	14	31
7:00 PM	26	9	12	47
8:00 PM	9	6	13	28
9:00 PM	12	9	7	28
10:00 PM	20	12	14	46
11:00 PM	8	6	13	27
04/19/2023 12:00 AM	10	4	12	26
1:00 AM	6	3	12	21
2:00 AM	3	8	18	29
3:00 AM	22	5	20	47
4:00 AM	21	10	17	48
5:00 AM	40	12	25	77
6:00 AM	38	8	17	63
7:00 AM	10	10	14	34
8:00 AM	42	17	24	83
9:00 AM	19	20	22	61
10:00 AM	12	15	44	71
Total	446	230	530	1206
Total %	37.0	19.1	43.9	100.0
AM Times	8:00 AM	10:00 AM	10:00 AM	11:00 AM
AM Peaks	42	15	44	73
PM Times	2:00 PM	12:00 PM	12:00 PM	12:00 PM
PM Peaks	25	15	53	89



Fish Transportation Group Inc.  
 1950 N Washington Street  
 Suite 211  
 Naperville, Illinois, United States 60563  
 708-660-0305

Count Name: 103rd St -  
 Doty Ave  
 Site Code:  
 Start Date: 04/18/2023  
 Page No: 2

**Direction (Northbound)**

Start Time	Lights	Mediums	Articulated Trucks	Total
11:00 AM	26	33	22	81
12:00 PM	16	33	33	82
1:00 PM	30	34	20	84
2:00 PM	32	32	15	79
3:00 PM	35	26	13	74
4:00 PM	28	20	10	58
5:00 PM	19	24	5	48
6:00 PM	27	18	6	51
7:00 PM	15	10	5	30
8:00 PM	8	13	11	32
9:00 PM	10	10	10	30
10:00 PM	19	8	8	35
11:00 PM	13	13	11	37
04/19/2023 12:00 AM	12	10	7	29
1:00 AM	9	15	4	28
2:00 AM	7	17	2	26
3:00 AM	15	19	6	40
4:00 AM	14	17	5	36
5:00 AM	8	26	6	40
6:00 AM	15	17	11	43
7:00 AM	14	14	7	35
8:00 AM	23	14	21	58
9:00 AM	7	16	13	36
10:00 AM	13	38	18	69
Total	415	477	269	1161
Total %	35.7	41.1	23.2	100.0
AM Times	8:00 AM	10:00 AM	10:00 AM	11:00 AM
AM Peaks	23	38	18	81
PM Times	2:00 PM	12:00 PM	12:00 PM	12:00 PM
PM Peaks	32	33	33	82



Fish Transportation Group Inc.  
1950 N Washington Street  
Suite 211  
Naperville, Illinois, United States 60563  
708-660-0305

Count Name: 103rd St -  
Doty Ave  
Site Code:  
Start Date: 04/18/2023  
Page No: 3

